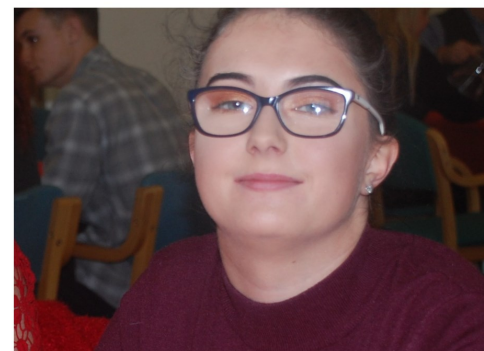


We're here for you



Our doors may be closed but we're still open.
Our friendly and supportive staff are on hand
Monday to Friday 9.30am - 5pm and over weekends 10am - 4pm.
Leave us a message outside these hours and we'll be in touch.

Carer Support and Dementia Advice Service for Hampshire

Providing advice, information and support to carers and
people with dementia and memory problems.

Contact us if you have any concerns.

Phone: 01264 332297 (option 3)

Email: enquiries@andovermind.org.uk



CARER SUPPORT AND
DEMENTIA ADVICE SERVICE
FOR HAMPSHIRE

